

El. Grove  
(PIKE)

John Miller

c. 154. 137

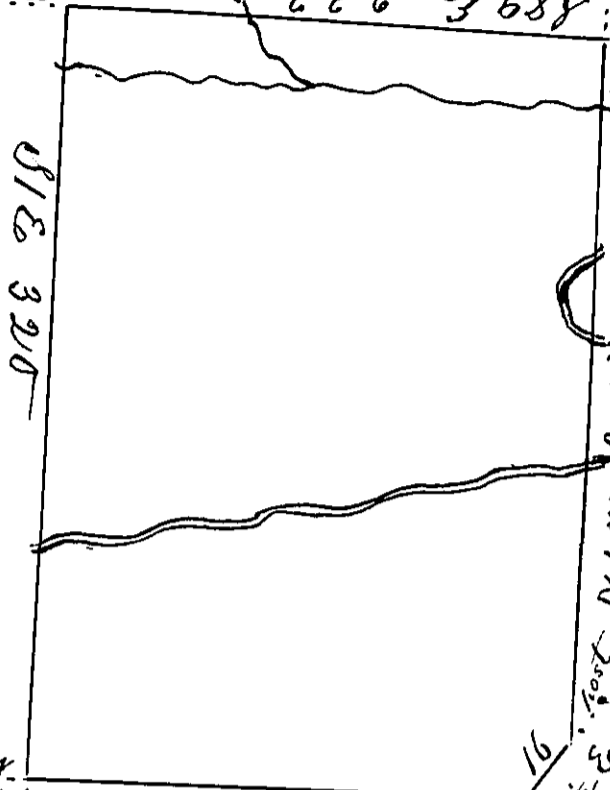
Mary Stocken  
Stone

Alexr. Miller

EEC 3688

Maple

John B. Stocker



c. 191. 37

Isaac Jones

Peter George

Dominic Joyce

F.S. 111

Margaret Stocker

Post by Chest

Post

By virtue of a Warrant dated the 11<sup>th</sup> February 1793,  
 Surveyed the 26<sup>th</sup> June 1793 to Richard Thomas, the  
 above described tract of land situate on Shoholy  
 Creek, in the County of Northampton, Containing  
 four hundred thirty nine acres fifty perches  
 and the allowance of six p. Cent &c.  
 To Daniel Brodhead Esquire }  
 Surveyor General } P. Geo. Palmer D.S.

IN TESTIMONY that the above is a copy of the original remaining on file in the  
 Department of Internal Affairs of Pennsylvania, made con-  
 formably to an Act of Assembly approved the 16th day of  
 February, 1833, I have hereunto set my Hand and caused  
 the Seal of said Department to be affixed at Harrisburg, this

Twenty eighth day of June 1886.

J. Simpson Africa,  
 Secretary of Internal Affairs